

Area to be maintained as glade with view south of Immingham. No planting is to be undertaken within this zone. Natural regeneration is to be removed as required to maintain open glade area.

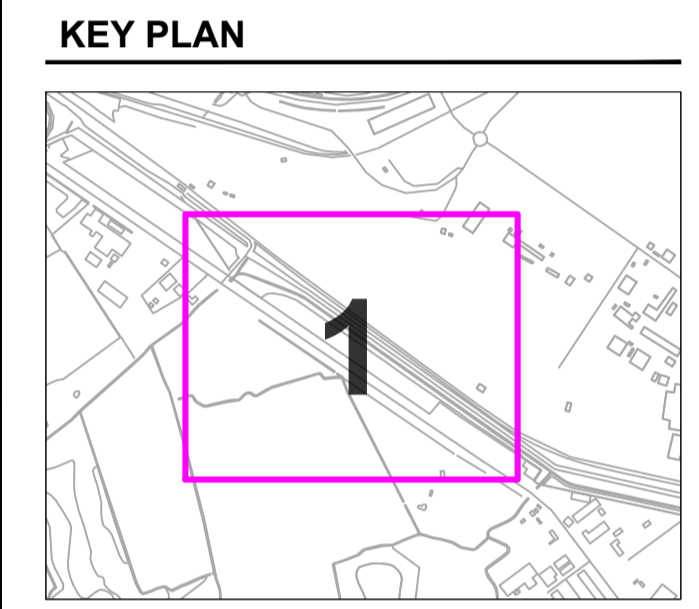
**PROJECT**  
 Immingham Green Energy Terminal (IGET)

**CLIENT**  
 Associated British Ports (ABP)

**CONSULTANT**  
 AECOM  
 Plumer House, Third Floor,  
 East Wing, Tallyour Road  
 Plymouth, PL6 5DH  
 Tel +44(0)1752 676700  
 Fax +44(0)870 238 6023  
 www.aecom.com

**GENERAL NOTES**

1. PLANS SHOULD BE READ IN CONJUNCTION WITH THE AECOM ARBORICULTURAL REPORT.
2. THE ORIGINAL OF THIS DRAWING WAS PRODUCED IN COLOUR - A MONOCHROME COPY SHOULD NOT BE RELIED UPON.
3. DRAWING REFERENCES:  
 LIDAR Information\_1.5m offset.dwg  
 OS\_Mapping.dwg



**KEY**

- LIDAR BASED TREE DATA (PRODUCED FROM DEFAULD LIDAR INFORMATION WITH 0.5M INCREMENTS. THINNER LINES INDICATE CONTOURS OF GREATER HEIGHT)
- LIKELY SUITABLE NEW WOODLAND ESTABLISHMENT AREA (SET 1.5M OFF FROM EXISTING LIDAR BASED VEGETATION)
- EDGE SCRUB HABITAT PLANTING, SPECIES MIX SPECIFIED FOR BUTTERFLY FOOD PLANT PROVISION.
- GLADE

**ISSUE/REVISION**

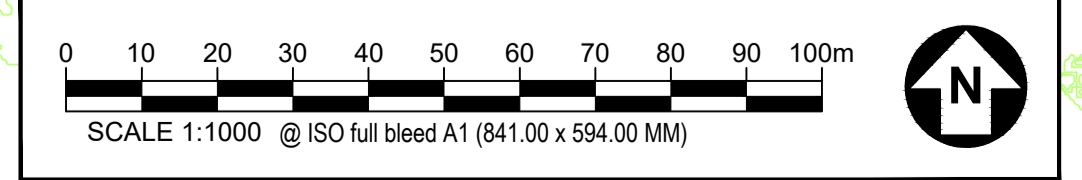
NO	DATE	DESCRIPTION
P01	11.04.24	FIRST ISSUE
IVR		

**DRAWING STATUS**  
 ISSUE

**PROJECT NUMBER**  
 60673509

**SHEET TITLE**  
 Potential Woodland Establishment Area LiDAR Assessment (SHEET 01)

**SHEET NUMBER**      **REV.**  
 60673509-ACM-XX-XX-AB-TCP-001      P01



This drawing has been prepared for the use of AECOM's client. It may not be used, modified, reproduced or relied upon by third parties, except as agreed by AECOM or as required by law. AECOM accepts no responsibility, and denies any liability whatsoever, to any party that uses or relies on this drawing without AECOM's express written consent. Do not scale this document. All measurements must be obtained from the stated dimensions.